

General Guidance

Fixing Backgrounds

To achieve a strong, secure and flat surface onto which the copings can be fixed, we strongly recommend that the top of the parapet wall is lined with a minimum 22mm thick marine grade plywood backing board. The backing board should be the width of the parapet wall and be securely fixed to withstand wind load forces. Ensure the backing board is fixed level, as any deviations will manifest themselves in the overall appearance of the installed coping.

1. Fig. 1

Fixing brackets must be located centrally at each coping joint abutment and spaced at maximum 1.5m centres. Secure each bracket using 4 no. No. 8 x 25mm flangehead screws, code SC204.

Optional

If required, the coping system can be laid to a fall of 2° or less by placing glazing shims (supplied by others) underneath the Fixing brackets.

2. Fig. 2

Offer coping panel into place by hooking the front drip edge over the fixing brackets. Remove butyl tape liner, then rotate panel downwards until in its resting position. Press the coping panel down firmly over entire bracket to ensure full contact is made with the high performance butyl sealing strips.

3. Fig. 3

In line with each bracket, on the inside return face pre-drill a 3.5mmØ hole through the coping panel and bracket. Insert No. 8 x 15mm colour matched flangehead screw, code SC250. Before fitting next coping section, repeat steps 1 and 2, then offer coping panel into position ensuring a 3mm expansion gap is left between abutting ends. Fix coping panel into position as step 3.

4. Fig. 4

Remove butyl tape and attach one full fixing bracket to one side of the coping angle. A 1/2 fixing bracket must be secured to the fixing background using 2 x SC204 screws as shown in Fig. 4. Position the angle in place ensuring the returns on the downstands engage with the coping length bracket and 1/2 bracket. Fix down remaining exposed full bracket with 2 x SC204 screws. Using SC250 (No.8 x 15mm) colour matched screws, fix through inside return faces into the brackets to anchor into position.

Further information and advice

If you have any queries, please contact The Alutec Technical Services Department on 01234 344108.

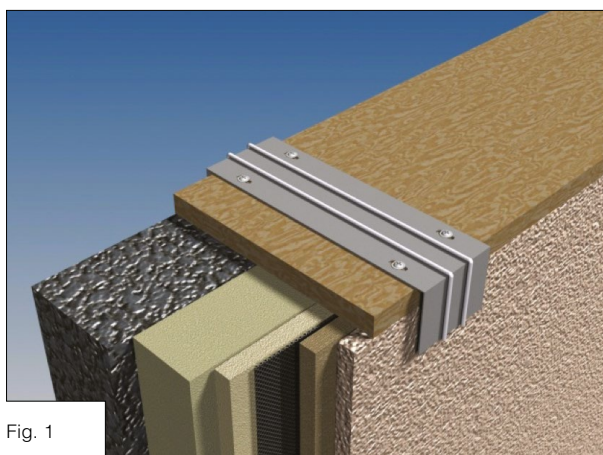


Fig. 1

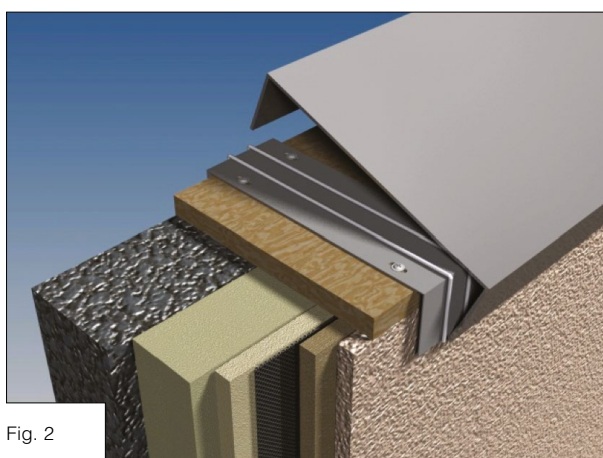


Fig. 2

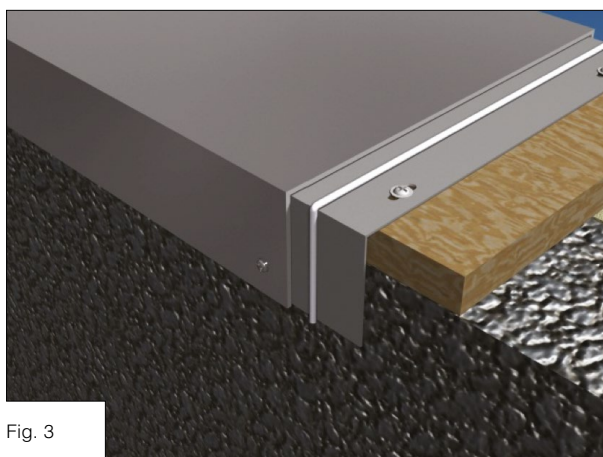


Fig. 3

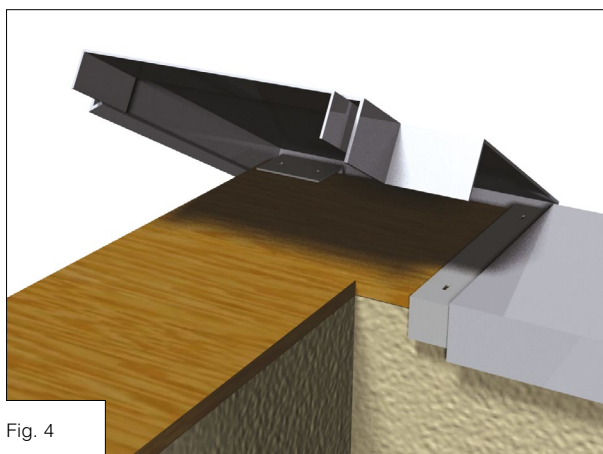


Fig. 4