

Coping Installation Guide

Fixing Backgrounds

Prior to fitting copings, we strongly recommend that a marine grade plywood backing board is securely installed to the wall header. The backing board will spread the wind load forces acting on the copings, whilst also ensuring a level background.

1. Fixing brackets must be located centrally at each coping joint abutment and spaced at maximum 1.5m centres. Secure each bracket using 4 no. No. 8 x 25mm flangehead screws, code SC204. Fig. 1

Optional

If required, the top face of the copings can be laid to a fall by placing packing shims (supplied by others) underneath the brackets. A typical fall would be 2°.

2. Offer coping panel into place by hooking the front drip edge over the fixing brackets. Remove butyl tape liner, then rotate panel downwards until in its resting position. Press the coping panel down firmly over entire bracket to ensure full contact is made with the high performance butyl sealing strips. Fig. 2
3. In line with each bracket, on the inside return face pre-drill a 3mmØ hole through the coping panel and bracket. Insert No. 8 x 15mm colour matched flangehead screw, code SC250. Fig. 3
4. Before fitting next coping section, repeat steps 1 and 2, then offer coping panel into position ensuring a 3mm expansion gap is left between abutting ends Fig. 4. Fix coping panel into position as step 3.

Further information and advice

If you have any queries, please contact The Alutec Technical Services Department on 01234 344108.

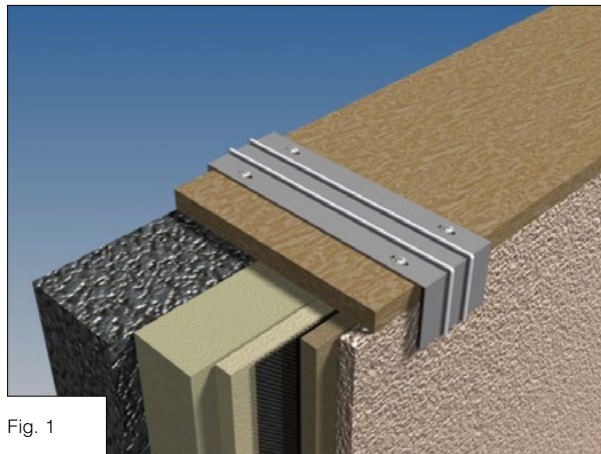


Fig. 1

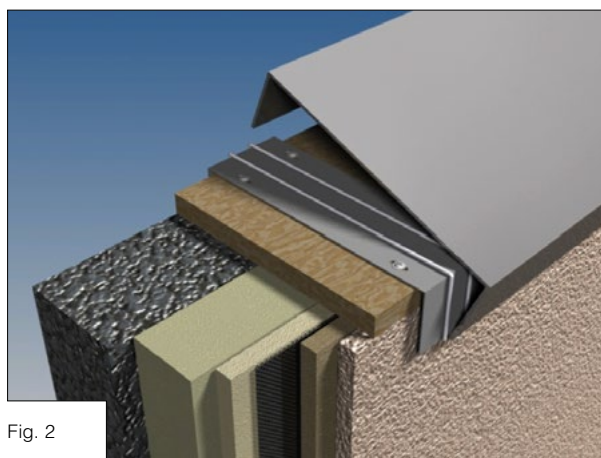


Fig. 2

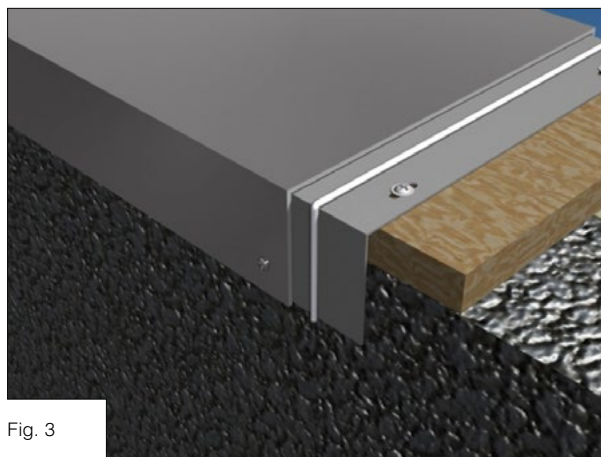


Fig. 3

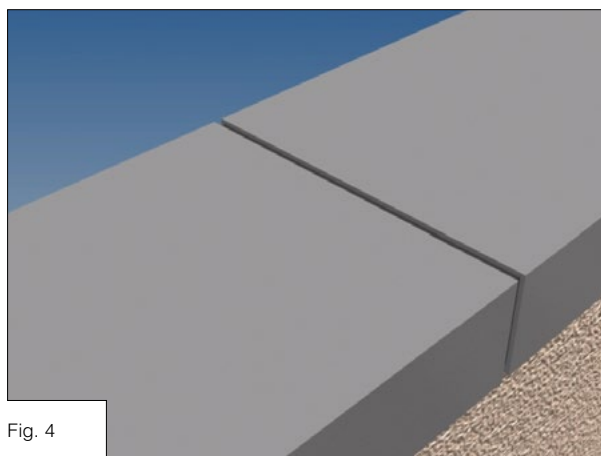


Fig. 4