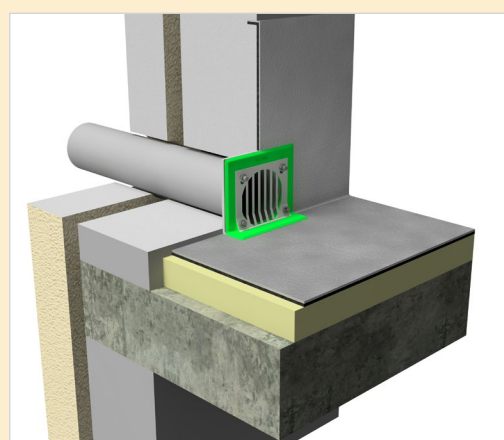
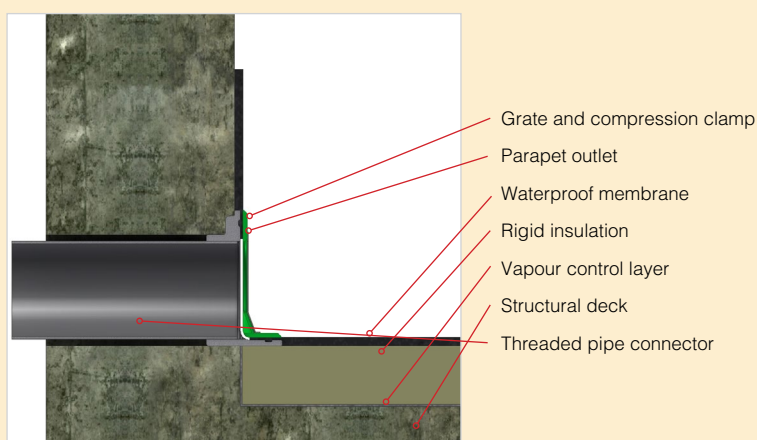
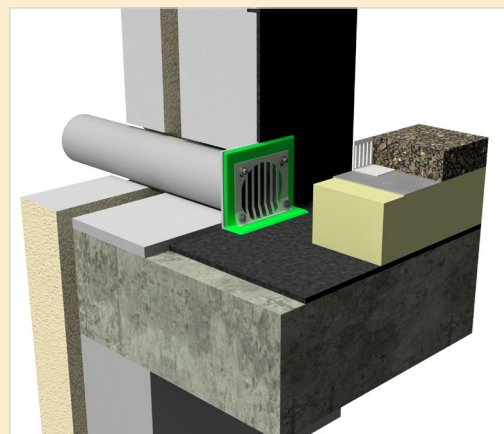
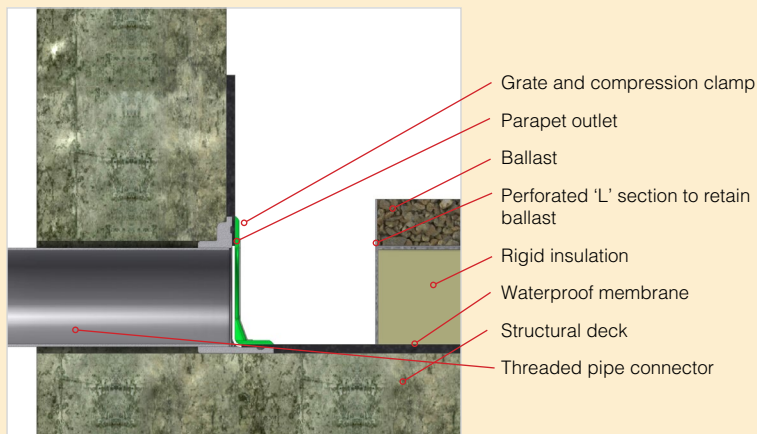


PARAPET OUTLET – WARM, COLD AND INVERTED ROOFS



GRP, Cold Liquid, Hotmelt Waterproofing Membranes

1. Remove the L shaped membrane clamp flange & stainless-steel grate. Remove wax paper ring, butyl seal strips including three foam transit spacers located within the throat of the outlet and discard.
2. Insert roof outlet with pipe adaptor fitted, into the structural opening and secure with 2 Nr A2 grade stainless steel screws (not provided) into the vertical background.
3. Dress the waterproofing membrane over the recessed grooves of the outlet body.
4. Place L shaped membrane clamp flange and grate over waterproofing membrane, then secure to outlet body with the 4 Nr male insert bolts. Tighten bolts in a diagonal sequence to ensure even compression. Check tightness after 15-30 mins and further tighten if required.

Sheet Waterproofing Membranes

1. Remove the L shaped membrane clamp flange & stainless-steel grate, wax paper ring from butyl seal ring including three foam transit spacers located within the throat of the roof outlet.
2. Insert roof outlet with pipe adaptor fitted, into the structural opening and secure with 2 Nr A2 grade stainless steel screws (not provided) into the vertical background.
3. Create a 500mm sq. skirt from the waterproof membrane and cut a 90x112mm rectangular hole in the middle and place over the outlet body & butyl seal strips.
4. Place L shaped membrane clamp flange and grate over waterproofing membrane, then secure to outlet body with the 4 Nr male insert bolts. Tighten bolts in a diagonal sequence to ensure even compression. Check tightness after 15-30 mins and further tighten if required.

Inverted roofs - A localised sump area/void, adjacent to the outlet, should be left within the insulation of approximately 200x200mm in size. The void area can be left open or backfilled with ballast.