

Code	Nominal size (mm)	Connection size (mm)	A (mm)	B (mm)	C (mm)	D (mm)	E (mm)
DR235	50	60	130	300	260	150	70
DR335	75	82	200	300	260	150	105
DR435	100	110	250	380	320	192	134
DR635	150	160	228	380	320	150	185

For Flat grate, add suffix "F" to product code, i.e. DR435F

Product description

Comprehensive range of roof, balcony and car park outlets offering market leading flow rate performance and a life expectancy of 50 years or more

- Made from marine grade aluminium for ultimate protection against corrosion, even in coastal or polluted environments
- Industry leading flow rate performance across the range, whilst all roof outlets can benefit from Marley Alutec's patented anti-vortex system, which increases flow rate still further
- Near zero maintenance, grates prevent debris entering the outlet
- Durable and strong, made from heavy grade cast aluminium for ultimate strength and durability

Physical properties

Material	Marine grade Aluminium alloy to BS EN1559:1997, BS EN 1676:1997 and BS EN 1706:1998
Life expectancy	50 years or more

Flow rate performance

Codes	Dome grate l/s	Flat grate l/s	Dome grate with Anti-Vortex fins l/s
DR235 / DR235F	1.70	1.70	1.70
DR335 / DR335F	3.77	4.07	4.51
DR435 / DR435F	7.14	8.13	8.56
DR635 / DR635F	9.33	12.00	11.83

Life Expectancy

Under normal UK atmospheric conditions, Marley Alutec systems if correctly installed have a life expectancy of 50 years or more. This may be marginally reduced in highly polluted or coastal areas.

NBS & BIM

A full suite of NBS and BIM files are available; see links in **Product information** section.

NBSPlus

Clause:	R10/365
Product:	Aluminium roof outlet
Type:	90° threaded
Grate type:	Domed grate / Flat grate
Manufacturer:	Marley Alutec, Unit 1 (G-H), Hudson Road, Elms Farm Industrial Estate, Bedford MK41 0LZ.

Product information

Visit www.marleyalutec.co.uk or click on the individual links below.

Technical Services Department

Marley Alutec Technical Services Department has many years' experience in assisting specifiers with all aspects of drainage design and installation. For advice, contact them on enquires@marleyalutec.co.uk, 01234 359438

Standards

All Marley Alutec systems are manufactured to and in excess of the appropriate BS or EN Standards. For a full list download the range brochure in the **Product information** section.

Maintenance

Roof outlets require minimal maintenance throughout their lifetime. Any build up of leaves or other debris must be removed from around the grate to maximise flow rate performance.

Environmental

Marley Alutec is committed to continually reducing its environmental impact and is accredited to ISO 14001:2004.



Handling & storage

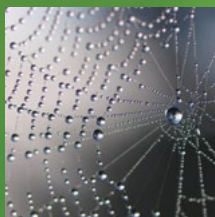
Outlets are delivered to site packaged and ready for installation. Outlets should be stored on a flat level surface and protected from mechanical damage.



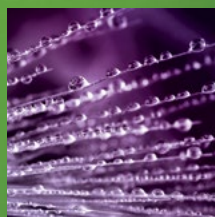
evolve RAINWATER SYSTEMS



traditional RAINWATER SYSTEMS



alligator RAINWATER SYSTEMS



evolve FASCIA, SOFFIT & COPING



roof OUTLET SYSTEMS



shower OUTLET SYSTEMS

ALUTEC

ALUMINIUM RAINWATER SYSTEMS

Head office

For general enquiries, please call **01234 359438**
For technical enquiries please call **01234 344108**
email: enquiries@marleyalutec.co.uk
Fax: **01234 357199**

Unit 1 (G-H), Viking Industrial Park, Hudson Road,
Elms Farm Industrial Estate, Bedford MK41 0LZ

Export Division

Aliaxis UK
Dickley Lane, Lenham, Kent, ME17 2DE
Telephone: **01622 858888** Fax: **01622 850778**



an *Aliaxis* company

/marleyalutec
 @marleyalutec
 /company/marleyalutec
marleyalutec.co.uk