

Code	Length (m)	A (mm)	B (mm)
GB513	3	131	85

## Product description

The Evolve Box aluminium gutter system combines the longevity and low maintenance of marine grade aluminium with the ease and speed of installation of plastic gutter systems.

- Life expectancy of 50 years or more
- Patented JuraJoint rubber joint that makes installation as fast and easy as PVC gutters
- Marine grade aluminium throughout for ultimate corrosion resistance – ideal for coastal or heavily polluted areas
- Durable & strong, more resistant to damage than steel, rollform or PVC systems

## Physical properties

<b>Material</b>	Marine grade 6063 T5 extrusion and LM6 castings
<b>Finish</b>	Polyester powder coated to BS EN 12206-1:2004
<b>Life expectancy</b>	50 years or more
<b>Downpipe compatibility</b>	<b>76mm Ø</b> Tudor, Traditional & Flush-fit downpipe systems <b>72x72mm</b> Traditional, Flush-fit & Vandal Resistant downpipe systems

## Flow rate performance

Downpipe system	End outlet l/s	Centre outlet l/s
76mm Ø	3.0	6.0
72x72mm	3.5	7.0

## Life Expectancy

Under normal UK atmospheric conditions, Marley Alutec systems if correctly installed have a life expectancy of 50 years or more. This may be marginally reduced in highly polluted or coastal areas.

## NBS & BIM

A full suite of NBS and BIM files are available; see links in **Product information** section.

<b>Clause:</b>	R10/311
<b>Product:</b>	Evolve Box aluminium rainwater system
<b>Manufacturer:</b>	Marley Alutec, Unit 1 (G-H), Hudson Road, Elms Farm Industrial Estate, Bedford MK41 0LZ.

## Product information

Visit [www.marleyalutec.co.uk](http://www.marleyalutec.co.uk) or click on the individual links below.

## Technical Services Department

Marley Alutec Technical Services Department has many years' experience in assisting specifiers with all aspects of drainage design and installation. For advice, contact them on [enquires@marleyalutec.co.uk](mailto:enquires@marleyalutec.co.uk), 01234 359438

## Standards

All Marley Alutec systems are manufactured to and in excess of the appropriate BS or EN Standards. For a full list download the range brochure in the **Product information** section.

## Maintenance

Rainwater systems should be periodically inspected and any built up debris removed to maintain performance. Rainwater systems can be periodically washed down with water and non-toxic detergent to remove build up of grime. Under no circumstances should abrasive cleaners be used.

## Environmental

Marley Alutec is committed to continually reducing its environmental impact and is accredited to ISO 14001:2004.



## Handling & storage

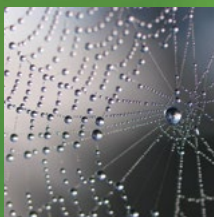
All gutter and pipe lengths are supplied in protective polythene sleeving and components packed in cardboard boxes. If polyester powder coated products are stored outside, cover with tarpaulin to guard against water ingress. If water becomes trapped within the polythene wrapping and left exposed to warm sunlight, it may leave permanent water stains on the paint finish.



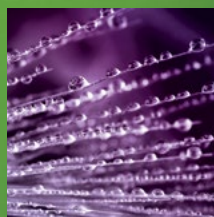
evolve RAINWATER SYSTEMS



traditional RAINWATER SYSTEMS



alligator RAINWATER SYSTEMS



evolve FASCIA, SOFFIT & COPING



roof OUTLET SYSTEMS



shower OUTLET SYSTEMS

# ALUTEC

ALUMINIUM RAINWATER SYSTEMS

### Head office

For general enquiries, please call **01234 359438**

For technical enquiries please call **01234 344108**

email: [enquiries@marleyalutec.co.uk](mailto:enquiries@marleyalutec.co.uk)

Fax: **01234 357199**

Unit 1 (G-H), Viking Industrial Park, Hudson Road,  
Elms Farm Industrial Estate, Bedford MK41 0LZ

### Export Division

Aliaxis UK

Dickley Lane, Lenham, Kent, ME17 2DE

Telephone: **01622 858888** Fax: **01622 850778**



an *Aliaxis* company

/marleyalutec

@marleyalutec

/company/marleyalutec

[marleyalutec.co.uk](http://marleyalutec.co.uk)