

Vented soffit slotted to give 25mm continuous ventilation area

## Product description

A pioneering concept in roofline solutions. Manufactured from composite aluminium, a material used on some of the world's most prestigious developments, where exceptional durability and aesthetics are key.

- Complements perfectly the long life expectancy and low maintenance of Marley Alutec aluminium gutter and downpipe systems
- Available in both vented and unvented designs
- Installs just like PVC and faster than sheet aluminium systems
- Life expectancy of 50 years or more
- No need for specialist trades or tools. Can be cut, drilled and bent (formed) using standard carpentry skills and tools

## Product Sizes

Code	Depth A (mm)*	Nominal length (m)
FV1100	100	3
FV1180	180	3
FV1240	240	3
FV1365	365	3
FV1490	490	3
FV1740	740	3

\* Non standard sizes available on request

## Physical properties

<b>Material</b>	4mm thick aluminium composite. Polyethylene thermal break between external surfaces
<b>Finish</b>	Kynar 500 fluorocarbon PVDF paint system including nano self cleaning additive
<b>Life expectancy</b>	50 years or more

## Life Expectancy

Under normal UK atmospheric conditions, Marley Alutec systems if correctly installed have a life expectancy of 50 years or more. This may be marginally reduced in highly polluted or coastal areas.

## NBS & BIM

A full suite of NBS and BIM files are available; see links in **Product information** section.

NBSPlus

<b>Clause:</b>	H72/470
<b>Product:</b>	Aluminium composite soffit system
<b>Manufacturer:</b>	Marley Alutec, Unit 1 (G-H), Hudson Road, Elms Farm Industrial Estate, Bedford MK41 0LZ.

## Product information

Visit [www.marleyalutec.co.uk](http://www.marleyalutec.co.uk) or click on the individual links below.

## Technical Services Department

Marley Alutec Technical Services Department has many years' experience in assisting specifiers with all aspects of drainage design and installation. For advice, contact them on [enquires@marleyalutec.co.uk](mailto:enquires@marleyalutec.co.uk), 01234 359438

## Standards

All Marley Alutec systems are manufactured to and in excess of the appropriate BS or EN Standards. For a full list download the range brochure in the **Product information** section.

## Maintenance

Evoke composite aluminium systems require minimal maintenance throughout their lifetime. Generally any grime build up can be cleaned off using clean water and a mild detergent. Solvents, aggressive detergents / cleaners or any form of abrasives must not be used. Cleaning annually will ensure the product will always look in pristine condition.

## Environmental

Marley Alutec is committed to continually reducing its environmental impact and is accredited to ISO 14001:2004.



## Handling & storage

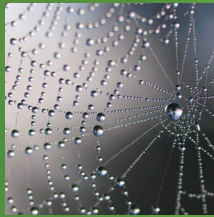
All goods should be stored under cover to protect against ingress of water between surfaces of composite aluminium sheets. Flat panels should be stored fully supported on a flat surface. Profiled lengths should also be fully supported throughout the product length and appropriately stacked to avoid damage to the profile. Ensure that the self-adhesive peel off protective cover is not damaged during handling exposing the painted surface to potential damage.



evolve RAINWATER SYSTEMS



traditional RAINWATER SYSTEMS



alligator RAINWATER SYSTEMS



evolve FASCIA, SOFFIT & COPING



roof OUTLET SYSTEMS



shower OUTLET SYSTEMS

# ALUTEC

ALUMINIUM RAINWATER SYSTEMS

### Head office

For general enquiries, please call **01234 359438**  
For technical enquiries please call **01234 344108**  
email: [enquiries@marleyalutec.co.uk](mailto:enquiries@marleyalutec.co.uk)  
Fax: **01234 357199**

Unit 1 (G-H), Viking Industrial Park, Hudson Road,  
Elms Farm Industrial Estate, Bedford MK41 0LZ

### Export Division

Aliaxis UK  
Dickley Lane, Lenham, Kent, ME17 2DE  
Telephone: **01622 858888** Fax: **01622 850778**



an *Aliaxis* company

/marleyalutec  
 @marleyalutec  
 /company/marleyalutec  
[marleyalutec.co.uk](http://marleyalutec.co.uk)