

30 x 25mm Return

Product description

A pioneering concept in roofline solutions. Manufactured from composite aluminium, a material used on some of the world's most prestigious developments, where exceptional durability and aesthetics are key.

- Complements perfectly the long life expectancy and low maintenance of Marley Alutec aluminium gutter and downpipe systems
- Installs just like PVC and faster than sheet aluminium systems
- Life expectancy of 50 years or more
- No need for specialist trades or tools. Can be cut, drilled and bent (formed) using standard carpentry skills and tools
- Can be fixed directly to roof truss ends, eliminating the expensive timber backers necessary when installing sheet aluminium system

Product Sizes

Code	Depth (A) mm*	Nominal length (m)
FC1150	150	3
FC1185	185	3
FC1235	235	3
FC1310	310	3
FC1435	435	3

* Non standard sizes available on request

Physical properties

Material	4mm thick aluminium composite. Polyethylene thermal break between external surfaces
Finish	Kynar 500 fluorocarbon PVDF paint system including nano self cleaning additive
Life expectancy	50 years or more

Life Expectancy

Under normal UK atmospheric conditions, Marley Alutec systems if correctly installed have a life expectancy of 50 years or more. This may be marginally reduced in highly polluted or coastal areas.

NBS & BIM

A full suite of NBS and BIM files are available; see links in **Product information** section.

NBSPlus

Clause:	H72/470
Product:	Aluminium composite fascia system
Manufacturer:	Marley Alutec, Unit 1 (G-H), Hudson Road, Elms Farm Industrial Estate, Bedford MK41 0LZ.

Product information

Visit www.marleyalutec.co.uk or click on the individual links below.

Technical Services Department

Marley Alutec Technical Services Department has many years' experience in assisting specifiers with all aspects of drainage design and installation. For advice, contact them on enquires@marleyalutec.co.uk, 01234 359438

Standards

All Marley Alutec systems are manufactured to and in excess of the appropriate BS or EN Standards. For a full list download the range brochure in the **Product information** section.

Maintenance

Evoke composite aluminium systems require minimal maintenance throughout their lifetime. Generally any grime build up can be cleaned off using clean water and a mild detergent. Solvents, aggressive detergents / cleaners or any form of abrasives must not be used. Cleaning annually will ensure the product will always look in pristine condition.

Environmental

Marley Alutec is committed to continually reducing its environmental impact and is accredited to ISO 14001:2004.



Handling & storage

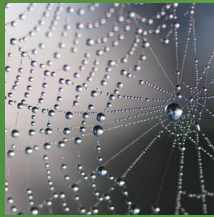
All goods should be stored under cover to protect against ingress of water between surfaces of composite aluminium sheets. Flat panels should be stored fully supported on a flat surface. Profiled lengths should also be fully supported throughout the product length and appropriately stacked to avoid damage to the profile. Ensure that the self-adhesive peel off protective cover is not damaged during handling exposing the painted surface to potential damage.



evolve RAINWATER SYSTEMS



traditional RAINWATER SYSTEMS



aligator RAINWATER SYSTEMS



evolve FASCIA, SOFFIT & COPING



roof OUTLET SYSTEMS



shower OUTLET SYSTEMS

ALUTEC

ALUMINIUM RAINWATER SYSTEMS

Head office

For general enquiries, please call **01234 359438**
For technical enquiries please call **01234 344108**
email: enquiries@marleyalutec.co.uk
Fax: **01234 357199**

Unit 1 (G-H), Viking Industrial Park, Hudson Road,
Elms Farm Industrial Estate, Bedford MK41 0LZ

Export Division

Aliaxis UK
Dickley Lane, Lenham, Kent, ME17 2DE
Telephone: **01622 858888** Fax: **01622 850778**



an *Aliaxis* company

[f](https://www.facebook.com/marleyalutec) /marleyalutec
[t](https://www.tumblr.com/marleyalutec) @marleyalutec
[in](https://www.linkedin.com/company/marleyalutec) /company/marleyalutec
marleyalutec.co.uk