

Code	Size (mm)	Nominal length (m)	A (mm)	B (mm)
GG513	155 x 100	3, 2 & 1	155	100

Product description

Aligator Ogee No. 46 aluminium guttering system with internal joints and concealed brackets offers a sleek and unobtrusive solution for both modern and traditional building designs

- Ideal for medium to large properties
- Flow rate of up to 7.9 l/s and 361m² per downpipe
- Life expectancy of 50 years or more
- Marine grade aluminium throughout for ultimate corrosion resistance – ideal for coastal or heavily polluted areas

Physical properties

Material	Marine grade 6063 T5 extrusion
Finish	Polyester powder coated to BS EN 12206-1:2004
Life expectancy	50 years or more
Downpipe compatibility	63mm, 76mm & 102mm Ø Tudor, Traditional & Flush-fit downpipe systems 72x72mm, 102x76mm & 102x102mm Traditional, Flush-fit & Vandal Resistant downpipe systems

Flow rate performance

Downpipe system	End outlet l/s	Centre outlet l/s
63mm Ø	3.50	5.90
76mm Ø	3.80	5.90
102mm Ø	4.00	7.60
72x72mm, 102x76mm	3.90	7.50
102x102mm	4.10	7.60

Life Expectancy

Under normal UK atmospheric conditions, Marley Alutec systems if correctly installed have a life expectancy of 50 years or more. This may be marginally reduced in highly polluted or coastal areas.

NBS & BIM

A full suite of NBS and BIM files are available; see links in **Product information** section.

Clause:	R10/311
Product:	Aligator snap fit Ogee No 46 aluminium rainwater system
Manufacturer:	Marley Alutec, Unit 1 (G-H), Hudson Road, Elms Farm Industrial Estate, Bedford MK41 0LZ.

Product information

Visit www.marleyalutec.co.uk or click on the individual links below.

Technical Services Department

Marley Alutec Technical Services Department has many years' experience in assisting specifiers with all aspects of drainage design and installation. For advice, contact them on enquires@marleyalutec.co.uk, 01234 359438

Standards

All Marley Alutec systems are manufactured to and in excess of the appropriate BS or EN Standards. For a full list download the range brochure in the **Product information** section.

Maintenance

Rainwater systems should be periodically inspected and any built up debris removed to maintain performance. Rainwater systems can be periodically washed down with water and non-toxic detergent to remove build up of grime. Under no circumstances should abrasive cleaners be used.

Environmental

Marley Alutec is committed to continually reducing its environmental impact and is accredited to ISO 14001:2004.



Handling & storage

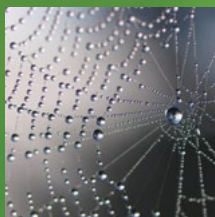
All gutter and pipe lengths are supplied in protective polythene sleeving and components packed in cardboard boxes. If polyester powder coated products are stored outside, cover with tarpaulin to guard against water ingress. If water becomes trapped within the polythene wrapping and left exposed to warm sunlight, it may leave permanent water stains on the paint finish.



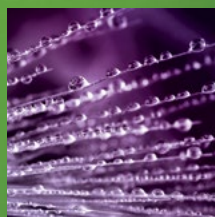
evolve RAINWATER SYSTEMS



traditional RAINWATER SYSTEMS



aligator RAINWATER SYSTEMS



evolve FASCIA, SOFFIT & COPING



roof OUTLET SYSTEMS



shower OUTLET SYSTEMS

ALUTEC

ALUMINIUM RAINWATER SYSTEMS

Head office

For general enquiries, please call **01234 359438**

For technical enquiries please call **01234 344108**

email: enquiries@marleyalutec.co.uk

Fax: **01234 357199**

Unit 1 (G-H), Viking Industrial Park, Hudson Road,
Elms Farm Industrial Estate, Bedford MK41 0LZ

Export Division

Aliaxis UK

Dickley Lane, Lenham, Kent, ME17 2DE

Telephone: **01622 858888** Fax: **01622 850778**



/marleyalutec

@marleyalutec

/company/marleyalutec

marleyalutec.co.uk

an *Aliaxis* company