



**ALUTEC**  
ALUMINIUM RAINWATER SYSTEMS

Total Eaves Solutions



Rainwater systems | Fascia, soffit and coping systems | Roof and shower outlets

## A Service & Product Solution Specialist

Alutec is the UK leader in innovative aluminium rainwater and eaves solutions; we pride ourselves in offering a complete service and product solution tailored to each project's needs. Our Technical Services Department can assist you with:

- Correct system choice
- Roof drainage design
- Installation advice
- Bespoke design service
- Scheduling quantities
- Fully itemised estimates

All Alutec product specifications and brochures can be downloaded from [www.marleyalutec.co.uk](http://www.marleyalutec.co.uk).

For further technical queries, please call our Technical Services Department on 01234 359438.



**evolve** RAINWATER SYSTEMS



**traditional** RAINWATER SYSTEMS



## Products

Alutec offers solutions for three distinct areas:

- Gutter and downpipe systems
- Fascia, soffit and coping systems
- Roof and shower outlets

All Alutec systems are manufactured to and in excess of the appropriate BS or EN Standards.

**aligator** RAINWATER SYSTEMS



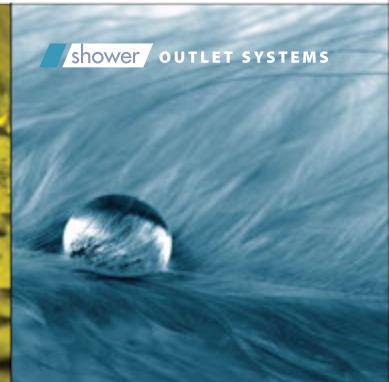
**evoke** FASCIA, SOFFIT & COPING



**roof** OUTLET SYSTEMS



**shower** OUTLET SYSTEMS





Prestige new build, Hampshire

## Benefits of Alutec's product ranges:

**Life expectancy**  
of 50 years or more

**Near-zero maintenance,**  
only periodic aesthetic  
cleaning required

**Marine grade  
aluminium,** Alutec  
systems will outlast other  
grade aluminium systems

Industry **leading flow  
rate** performance

**Innovative and  
sustainable** design

**Durable and strong,**  
made from extruded  
and cast aluminium,  
making Alutec systems  
more resistant to  
damage than steel,  
roll-form or PVC systems

**Traditional and  
modern** range options

Full **technical support**  
and design service

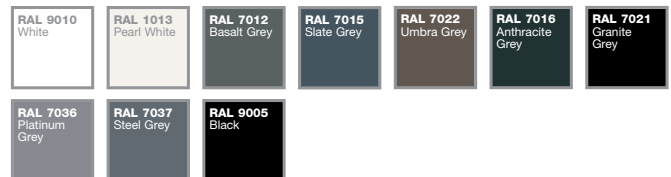
Aluminium is **65%  
lighter** than steel or  
cast iron, making Alutec  
easier and safer to install

## Colours and finishes:

Gutter and downpipe systems: 24 standard colours, including Heritage Black, with a textured surface, emulating the appearance of cast iron. In addition we offer hundreds of non standard colours. Contact Alutec for further information on 01234 359438.



## Fascia, soffit and coping systems: 10 standard colours



Colours are approximate and for general guidance only. For exact colour and finish reference, colour plates are available on request. Additional colours and finishes are available for special projects. Subject to extended delivery time and minimum order quantity. For information on these and the gloss levels, contact Alutec on 01234 359438.



Wichelstowe, Swindon, Wiltshire

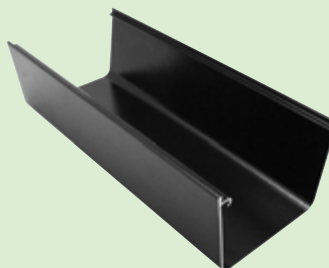




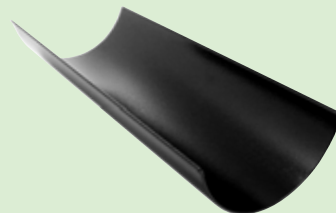
Evolve Ogee



Lawley Farm, Telford, Shropshire



Evolve Box



Evolve Half Round





- Using the latest manufacturing technologies to reduce its carbon footprint, making the Evolve family one of the most green and sustainable systems available in the UK today
- Industry leading flow rate performance, reducing the number of downpipes required
- The unique patented JuraJoint makes jointing quick, simple and secure
- Available at a lower price in the popular Heritage Black finish, with a textured surface to emulate the appearance of cast iron
- **New** Tudor downpipe system compatible with the Evolve range



Lochside Hotel, New Cumnock, Ayrshire



Knockroon Village, Ayrshire



JuraJoint



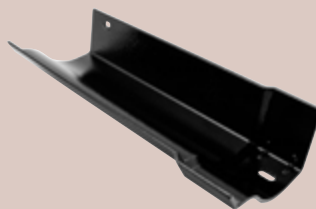
Evolve Deepflow



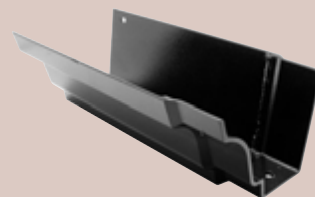
Traditional Half Round



Moreteyne Manor, Bedfordshire



Traditional Victorian Ogee



Traditional Moulded Ogee





# traditional

- Suitable for listed buildings and conservation areas
- Manufactured to BS 8530:2010, a new standard for Traditional rainwater systems
- Ideal for replacement of an old cast iron system or to reflect traditional styling of a new building
- Each profile available in three sizes
- **New** Tudor downpipe system, the ultimate replacement for heritage and period style properties is compatible with the Traditional range



Church of St. John the Baptist, Midlands



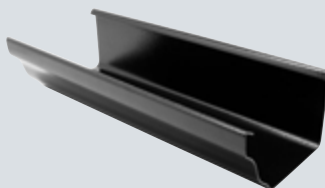
Prestige new build, Hampshire



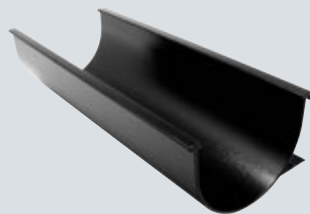
Aligator Boxer



National Oceanography Centre, Southampton, Hampshire



Aligator Classic



Aligator Deepflow



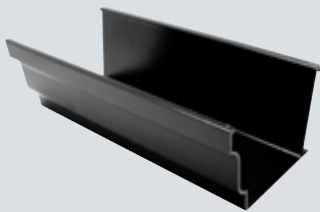




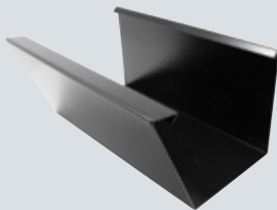
- Sleek and modern solution for rainwater disposal
- Patented Aligator® snap fit jointing system, proven to reduce installation times by up to 40% compared to traditional bolted systems
- Aligator® Classic profile is a domestic size ogee gutter; available at a lower price in the popular textured Heritage Black finish



Beaumont School, Suffolk



Aligator Ogee No. 46



Aligator Giant



C of E Primary School, Sissinghurst, Kent



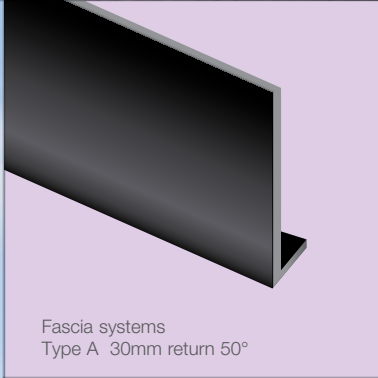
Chapel View, Goudhurst, Kent



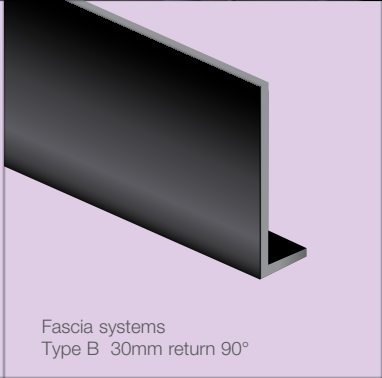
Joint Services Facility, Llandrindod Wells, Powys



Oaks and Acorns Estate, Luton, Bedfordshire



Fascia systems  
Type A 30mm return 50°



Fascia systems  
Type B 30mm return 90°



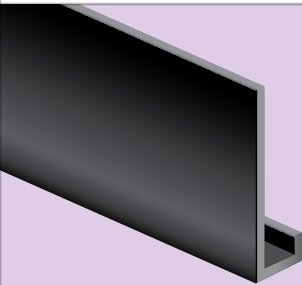




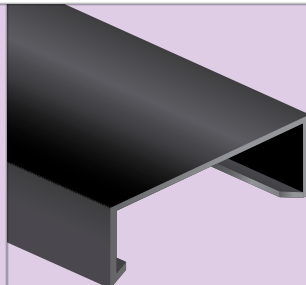
- Made from aluminium composite, a material with a 30 year proven track record of being as durable as conventional sheet aluminium
- Life expectancy of 50 years or more
- Rigid and strong; only 4mm thick and can support gutters without the need for expensive timber backing boards
- Fade resistant architectural grade PVDF paint finish
- Fast and easy installation
- Ideal for overcladding existing timber fascias
- Nano self-cleaning surface



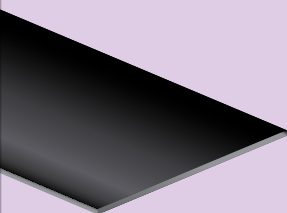
Southwater Visitor Centre, Telford



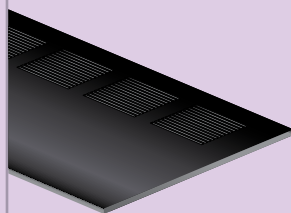
Fascia systems  
Type C 30x25mm return



Wall coping systems



Universal soffit systems  
Unvented

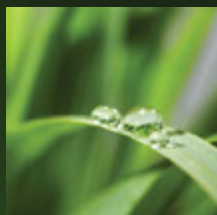


Universal soffit systems  
Vented

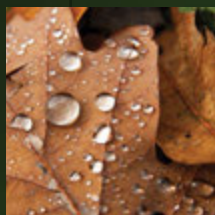


Prestige House, Bedfordshire





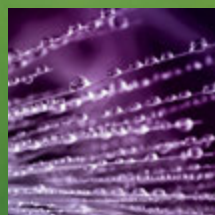
**evolve** RAINWATER SYSTEMS



**traditional** RAINWATER SYSTEMS



**alligator** RAINWATER SYSTEMS



**evolve** FASCIA, SOFFIT & COPING



**roof** OUTLET SYSTEMS



**shower** OUTLET SYSTEMS

# ALUTEC

ALUMINIUM RAINWATER SYSTEMS

## Head office

For general enquiries, please call **01234 359438**  
 For technical enquiries please call **01234 344108**  
 email: **enquiries@marleyalutec.co.uk**  
 Fax: **01234 357199**

Unit 1 (G-H), Viking Industrial Park, Hudson Road,  
 Elms Farm Industrial Estate, Bedford MK41 0LZ

an *Aliaxis* company

## Export Division

Aliaxis UK  
 Dickley Lane, Lenham, Kent, ME17 2DE  
 Telephone: **01622 858888** Fax: **01622 850778**  
 email: **export@aliaxis.co.uk**



**f** /marleyalutec  
**t** @marleyalutec  
**in** /company/marleyalutec  
**marleyalutec.co.uk**