

Cl/Sfb	(52.6)	In6
ALUTEC EVOKE		

May 2018



**ALUTEC**  
evoke COPING SYSTEMS

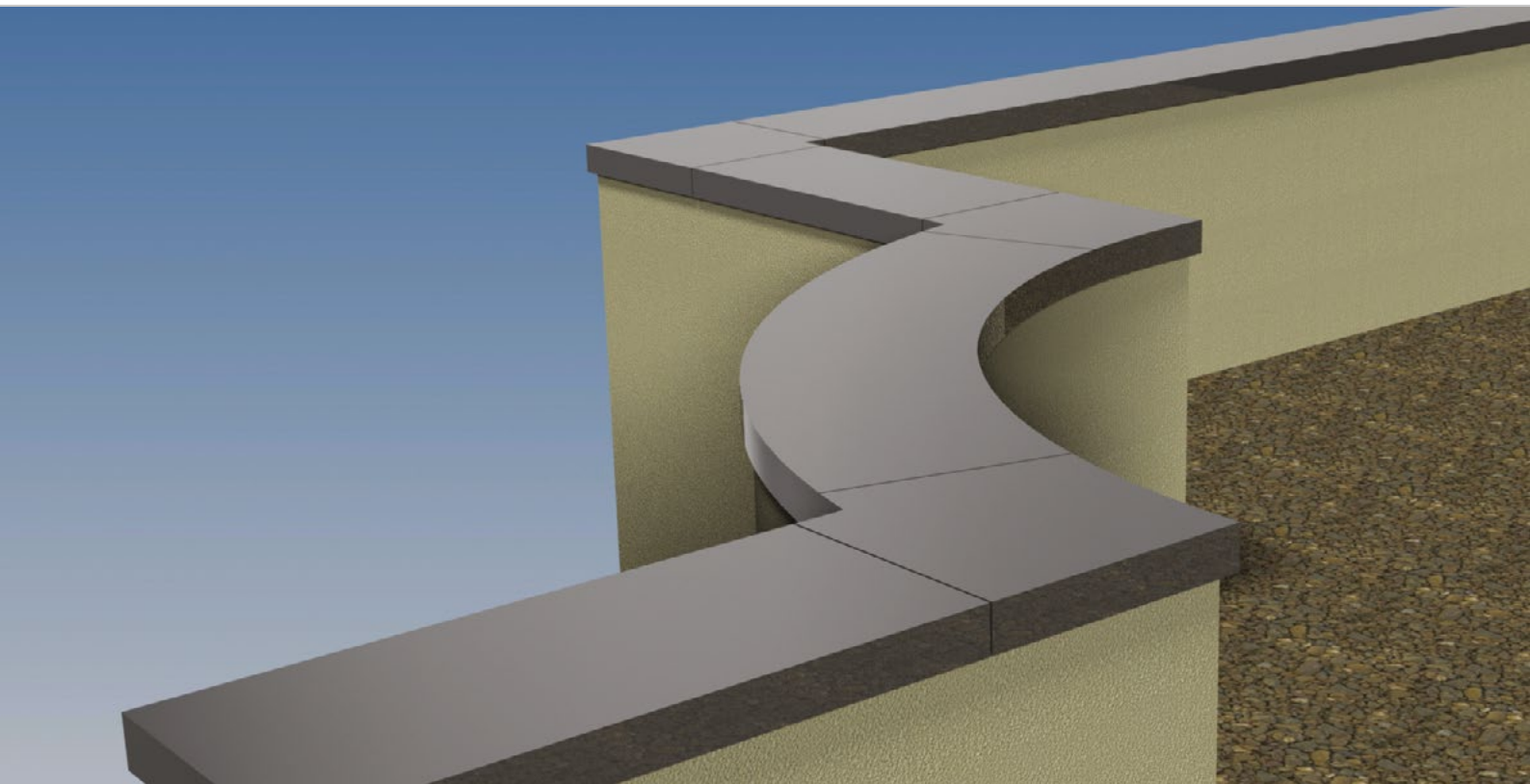
Product guide





Joint Services Facility,  
Llandrindod Wells, Powys

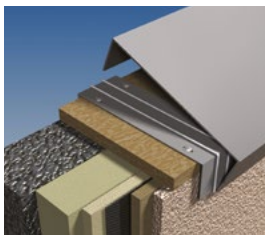
## The Evoke Coping range



The Evoke coping range is designed to meet the highest standards of durability and to withstand the most extreme weather the UK can throw at it.

### Wind loading

Tested by a UK based independent building research centre to withstand hurricane force winds of up to 176mph; 24% greater than the highest ever recorded UK wind speed of 142mph.



### Weathertight

Superior butyl adhesive seal, which outlasts EPDM compression seals normally used in coping systems and maintains a 100% weathertight seal throughout its life expectancy of 50 years or more.

### Durable

Comprising a recycled polyethylene core with an aluminium skin, Marley Alutec coping systems are as durable as sheet aluminium systems, giving them a life expectancy of 50 years or more.

### Fast & simple installation

Evoke coping panels are fast to position and fix. Whilst on-site adjustments can be made quickly and easily with standard carpentry tools and skills, saving valuable installation time and cost.

### Strong & rigid

At 4mm thick, Evoke coping panels create perfectly smooth and flat surfaces, which will not bow or ripple like thinner gauge materials.

### Colour stable

Available in 12 PVDF fluorocarbon paint finishes - the most colour stable architectural grade paint finish available.

### Low maintenance

PVDF paint finish includes a nano additive to resist the build-up of grime and moss, keeping cleaning costs to a minimum.

### Sustainable

At the end of its long life expectancy, Marley Alutec coping systems can be fully recycled.





## Surface Finish

External faces of Evoke panels are coated with a factory applied three layer, three bake Kynar 500 fluorochemical PVDF external architectural grade paint to a 30 – 40% gloss level, incorporating a Nano additive to resist adhesion of grime and moss. The rear surface is coated with a protective lacquer coating.

## Colour Stability

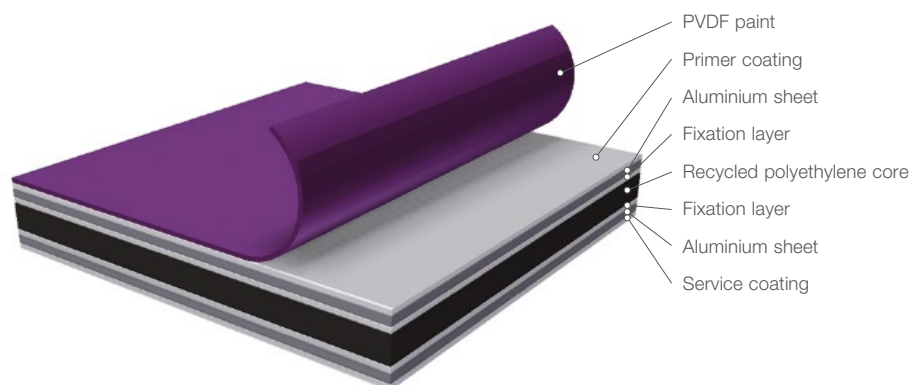
The colour stability is unrivalled by other external grade paint finishes and provides excellent and uniform colour retention throughout its 50 year + life expectancy.

## Colour Options

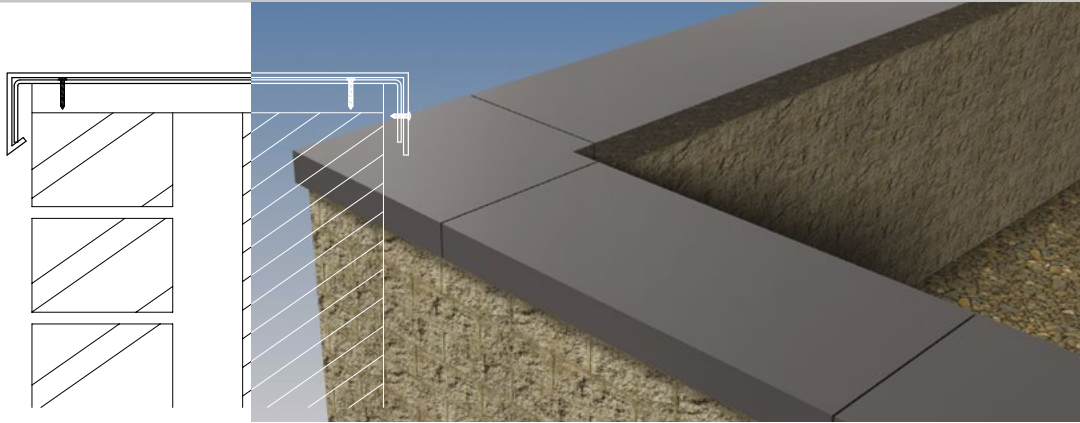
<b>RAL 9005</b> Black	<b>RAL 9010</b> White	<b>RAL 1013</b> Pearl White
<b>RAL 9006</b> Silver	<b>RAL 7036</b> Platinum Grey	<b>RAL 7037</b> Steel Grey
<b>RAL 7012</b> Basalt Grey	<b>RAL 7015</b> Slate Grey	<b>RAL 7022</b> Umber Grey
<b>RAL 7016</b> Anthracite Grey	<b>RAL 7021</b> Granite Grey	<b>BS 08B29</b> Vandyke Brown

Colours are approximate and for general guidance only. For exact colour and finish reference, colour plates are available on request.

Additional colours are available for special projects subject to a minimum order quantity and lead time. For information on these and the gloss levels, please contact Marley Alutec.

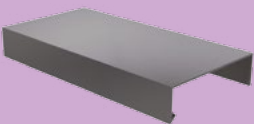
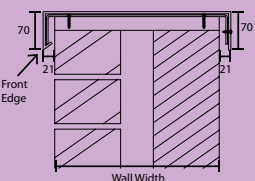
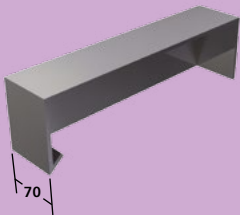
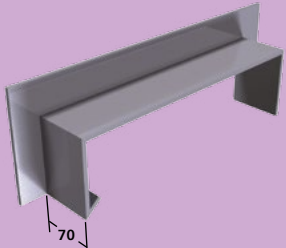
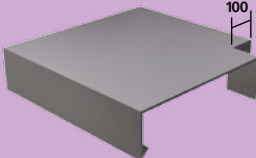
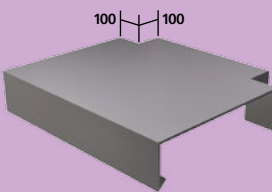



# Bespoke design service and Coping system



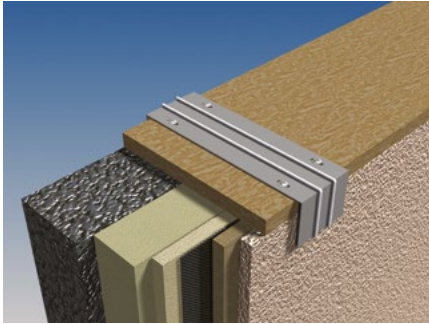
Every project is different, so Marley Alutec works with each client to ensure optimum performance of the system is achieved and costs kept to a minimum, whilst maintaining the clients' intended design and visual impact. Once designs are agreed, we produce manufacturing drawings for client approval and then work with the chosen installers to ensure a smooth installation process.

## Evoke coping system components

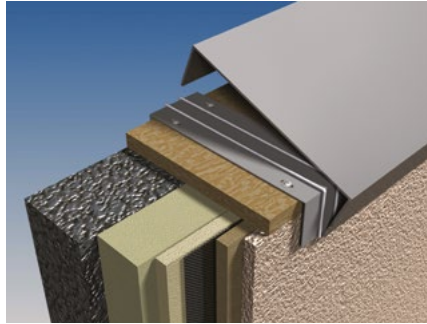
 	<h3>Coping - 3m</h3> <table border="1"> <thead> <tr> <th>Code</th><th>Wall width ranges</th></tr> </thead> <tbody> <tr> <td>-</td><td>Bespoke, cut to size to fit exact wall width</td></tr> </tbody> </table> <p>Supplied with 2 Fixing brackets and required screws per 3m length.</p> <p>Please state precise wall width with estimate request or order. Coping cut to size by Marley Alutec to fit exact wall width.</p>	Code	Wall width ranges	-	Bespoke, cut to size to fit exact wall width				
Code	Wall width ranges								
-	Bespoke, cut to size to fit exact wall width								
	<h3>Stop end</h3> <table border="1"> <thead> <tr> <th>Code</th><th>Wall width ranges</th></tr> </thead> <tbody> <tr> <td>-</td><td>Bespoke, cut to size to fit exact wall width</td></tr> </tbody> </table> <p>Supplied with 1 Fixing bracket and required screws.</p> <p>Please state precise wall width with estimate request or order. Stop end cut to size by Marley Alutec to fit exact wall width.</p>	Code	Wall width ranges	-	Bespoke, cut to size to fit exact wall width				
Code	Wall width ranges								
-	Bespoke, cut to size to fit exact wall width								
	<h3>Stop end upstand</h3> <table border="1"> <thead> <tr> <th>Code</th><th>Wall width ranges</th></tr> </thead> <tbody> <tr> <td>-</td><td>Bespoke, cut to size to fit exact wall width</td></tr> </tbody> </table> <p>Supplied with 1 Fixing bracket and required screws.</p> <p>Please state precise wall width with estimate request or order. Stop end upstand cut to size by Marley Alutec to fit exact wall width.</p>	Code	Wall width ranges	-	Bespoke, cut to size to fit exact wall width				
Code	Wall width ranges								
-	Bespoke, cut to size to fit exact wall width								
	<h3>Angle 90°</h3> <table border="1"> <thead> <tr> <th>Code</th><th>Wall width ranges</th></tr> </thead> <tbody> <tr> <td>-</td><td>Bespoke, cut to size to fit exact wall width</td></tr> </tbody> </table> <p>Supplied with 1 Fixing bracket and required screws.</p> <p>Please state precise wall width with estimate request or order. Angle cut to size by Marley Alutec to fit exact wall width.</p>	Code	Wall width ranges	-	Bespoke, cut to size to fit exact wall width				
Code	Wall width ranges								
-	Bespoke, cut to size to fit exact wall width								
	<h3>T-Junction 90°</h3> <table border="1"> <thead> <tr> <th>Code</th><th>Wall width ranges</th></tr> </thead> <tbody> <tr> <td>-</td><td>Bespoke, cut to size to fit exact wall width</td></tr> </tbody> </table> <p>Supplied with 2 Fixing brackets and required screws.</p> <p>Please state precise wall width with estimate request or order. T-Junction cut to size by Marley Alutec to fit exact wall width.</p>	Code	Wall width ranges	-	Bespoke, cut to size to fit exact wall width				
Code	Wall width ranges								
-	Bespoke, cut to size to fit exact wall width								
	<h3>Fixing bracket</h3> <table border="1"> <thead> <tr> <th>Code</th><th>Wall width ranges</th></tr> </thead> <tbody> <tr> <td>-</td><td>Bespoke, cut to size to fit exact wall width</td></tr> </tbody> </table> <p>Supplied with required screws.</p> <p>Please state precise wall width with estimate request or order. Fixing bracket cut to size by Marley Alutec to fit exact wall width.</p>	Code	Wall width ranges	-	Bespoke, cut to size to fit exact wall width				
Code	Wall width ranges								
-	Bespoke, cut to size to fit exact wall width								
<h3>Installation sundries</h3> <table border="1"> <thead> <tr> <th>Code</th><th>Description</th></tr> </thead> <tbody> <tr> <td>SC204</td><td>No. 8 x 25mm flangehead screw</td></tr> <tr> <td>SC250</td><td>No. 8 x 15mm colour matched flangehead screw</td></tr> <tr> <td>SC103</td><td>Joint sealant – colour matched</td></tr> </tbody> </table>		Code	Description	SC204	No. 8 x 25mm flangehead screw	SC250	No. 8 x 15mm colour matched flangehead screw	SC103	Joint sealant – colour matched
Code	Description								
SC204	No. 8 x 25mm flangehead screw								
SC250	No. 8 x 15mm colour matched flangehead screw								
SC103	Joint sealant – colour matched								

## Installation overview and General systems advice

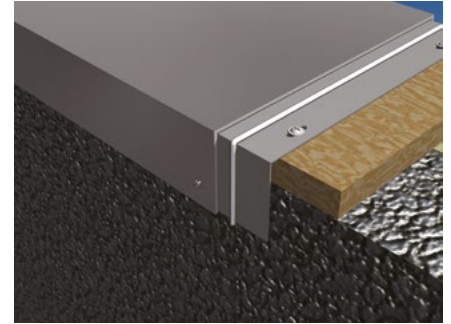
Full installation instructions are provided with each delivery and can also be downloaded from [www.marleyalutec.co.uk](http://www.marleyalutec.co.uk)



Fixing brackets must be located centrally at each coping joint abutment and spaced at maximum 1.5m centres



Offer coping panel into place by hooking the front drip edge over the fixing brackets. Rotate panel downwards until in its resting position



Discreetly fix coping length to Fixing bracket using Alutec Flangehead screws.

A 3mm expansion gap must be left between coping lengths and the joint pointed with Alutec colour matched Joint sealant

## General systems advice

### Maintenance

Evoke composite aluminium systems require minimal maintenance throughout the lifetime of the installation. Generally any grime build up can be cleaned off using clean water and a mild detergent. Non Alutec solvents, aggressive detergents /cleaners or any form of abrasives must not be used. Cleaning annually will ensure the product will always look in pristine condition.

### Storage and handling

All goods should be stored under cover to protect against ingress of water between surfaces of composite aluminium sheets. Flat panels should be stored fully supported on a flat surface. Profiled lengths should also be fully supported throughout the product length and appropriately stacked to avoid damage to the profile.

Ensure that the self-adhesive peel off protective cover is not damaged during handling exposing the painted surface to potential damage.

### Safety

The relevant safety regulations are outlined in the Health and Safety at Work Act 1974 and should be adhered to.

Refer to the Approved Code of Practice (ACOP) Construction Design and Management Regulations 2007.

Handling composite aluminium products does not pose any known health hazard, however it is recommended that protective gloves are worn. Hazard instructions relating to sealant and solvent cleaner are printed on the product packaging. COSHH sheets are supplied with each consignment of goods and are also available on request.



## The Evoke Coping range



### Evolve

Gutter range specifically developed to meet the demands of both the building owner and installer. Evolve systems combine high flow rate performance with fast and easy installation. Evolve systems use the latest manufacturing technologies to reduce its carbon footprint.



### Aligator®

Two distinctive design solutions: Aligator Classic, a domestic size ogee style gutter system with external unions and brackets; ideal for community or local authority housing.

Deepflow, Ogee and Boxer profiles with internal joints and concealed brackets, offering a sleek and unobtrusive solution for modern building design.



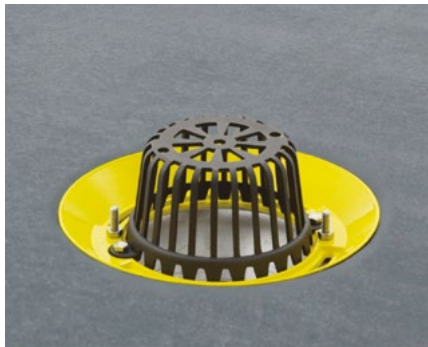
### Traditional

A range of BS 8530:2010 traditional style bolted gutter systems for replacement of cast iron on period, listed or traditional style new builds, combining aluminium's inherent benefits of longevity and low maintenance. Manufactured to original British Standard cast iron dimensions; available in Half Round, Victorian Ogee and Moulded Ogee profiles with matching round, square and rectangular downpipe options.



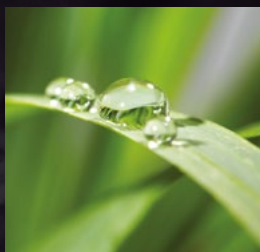
### Evoke fascia, soffit and coping

A pioneering concept in roofline solutions. Manufactured from composite aluminium, a material used on some of the world's most prestigious developments, where exceptional durability and aesthetic appearance are key.



### Roof outlets

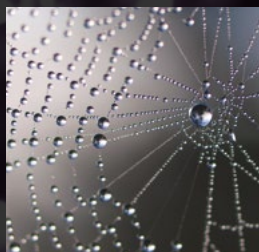
A comprehensive range of aluminium roof outlets for a wide range of applications. Each component has been engineered to achieve design flexibility and the highest performance specification to give complete confidence to the specifier.



**evolve** RAINWATER SYSTEMS



**traditional** RAINWATER SYSTEMS



**alligator** RAINWATER SYSTEMS



**evolve** FASCIA, SOFFIT & COPING



**roof** OUTLET SYSTEMS

# ALUTEC

ALUMINIUM RAINWATER SYSTEMS

## Head office

For general enquiries, please call **01234 359438**  
For technical enquiries please call **01234 344108**  
email: **[enquiries@marleyalutec.co.uk](mailto:enquiries@marleyalutec.co.uk)**  
Fax: **01234 357199**

Unit 1 (G-H), Viking Industrial Park, Hudson Road,  
Elms Farm Industrial Estate, Bedford MK41 0LZ

## Export Division

Aliaxis UK  
Dickley Lane, Lenham, Kent, ME17 2DE  
Telephone: **01622 858888** Fax: **01622 850778**

an *OAliaxis* company

 /marleyalutec  
 @marleyalutec  
 /company/marleyalutec  
**[marleyalutec.co.uk](http://marleyalutec.co.uk)**