

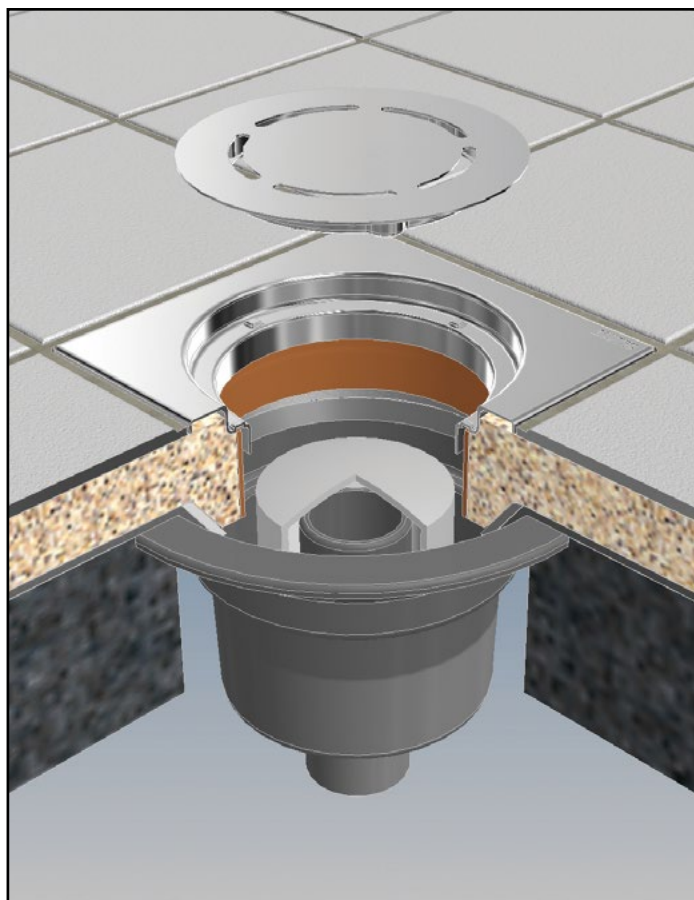
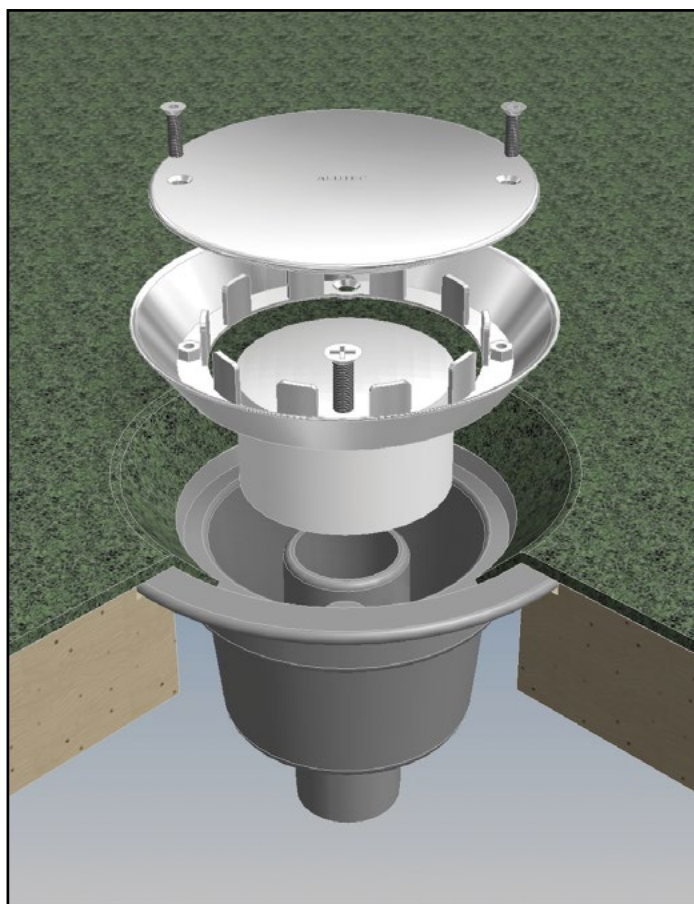
Installation Guidance

Sheet flooring

1. Recess outlet body into floor surface ensuring top of the outlet is level with the structural floor.
2. Connect 40mm Ø waste pipe onto the bottom of the outlet spigot using adaptor supplied. If using a DF212 vertical spigot outlet, the body can be directly fitted into a 110mm Ø ring seal drain connector.
3. Screw down outlet body with stainless steel countersunk screws.
4. Dress waterproof membrane into the dish of the outlet body. For sheet membranes apply silicone sealant to outlet body prior to dressing the membrane to form a watertight seal.
5. Secure the stainless steel clamping ring over the waterproof membrane with screws provided, check that the membrane is fully clamped into position.
6. Place bell trap cup into position.
7. Fit stainless steel grate over the clamping ring with hex insert screws provided.

Tiled flooring

1. Recess outlet body into floor surface ensuring top of the outlet is level with the structural floor.
2. Connect 40mm Ø waste pipe onto the bottom of the outlet spigot using adaptor supplied. If using a DF232 vertical spigot outlet, the body can be directly fitted into a 110mm Ø ring seal drain connector.
3. Screw down outlet body with stainless steel countersunk screws.
4. Dress waterproof membrane into the dish of the outlet body. For sheet membranes apply silicone sealant to outlet body prior to dressing the membrane to form a watertight seal.
5. Secure the white clamping ring over the waterproof membrane with screws provided, check that the membrane is fully clamped into position.
6. Lay screed to falls up to the outlet body leaving a 110mm Ø circular opening directly above. To avoid screed falling into the outlet body, an off cut of 110mm Ø soil pipe can be used.
7. Place white bell trap cup into position.
8. Apply tile adhesive around the circular outlet opening and set the stainless steel square tile grate



Environmental

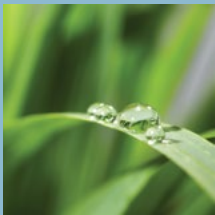
Ensure all packaging is disposed of responsibly in accordance with current waste disposal regulations. Aluminium and stainless are infinitely recyclable materials and therefore all salvaged items should be disposed of at a metal recycling depots.

Safety

The relevant safety regulations are outline in the Health and Safety at Work Act 1974 and should be followed.

Refer to the Approved Code of Practice (ACOP) Construction Design and Management Regulations 2007.

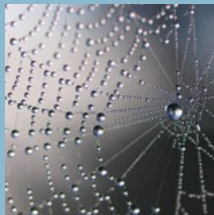
Polyester power coated aluminium products do not pose any known health hazard.



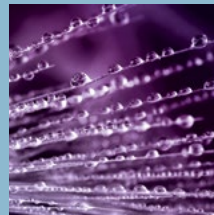
evolve RAINWATER SYSTEMS



traditional RAINWATER SYSTEMS



alligator RAINWATER SYSTEMS



evoke FASCIA AND SOFFIT



roof OUTLET SYSTEMS



shower OUTLET SYSTEMS

ALUTEC

ALUMINIUM RAINWATER SYSTEMS

L29-14

Head office

For general enquiries, please call **01234 359438**

For technical enquiries please call **01234 344108**

email: enquiries@marleyalutec.co.uk

Fax: **01234 357199**

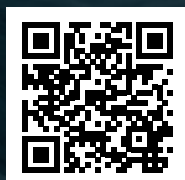
Unit 1 (G-H), Viking Industrial Park, Hudson Road, Elms Farm Industrial Estate, Bedford MK41 0LZ

Export Division

Aliaxis UK


Lenham, Kent, ME17 2DE


Telephone: **01622 858888** Fax: **01622 850778**



an *Aliaxis* company

 /marleyalutec

 @marleyalutec

 /company/marleyalutec

marleyalutec.co.uk