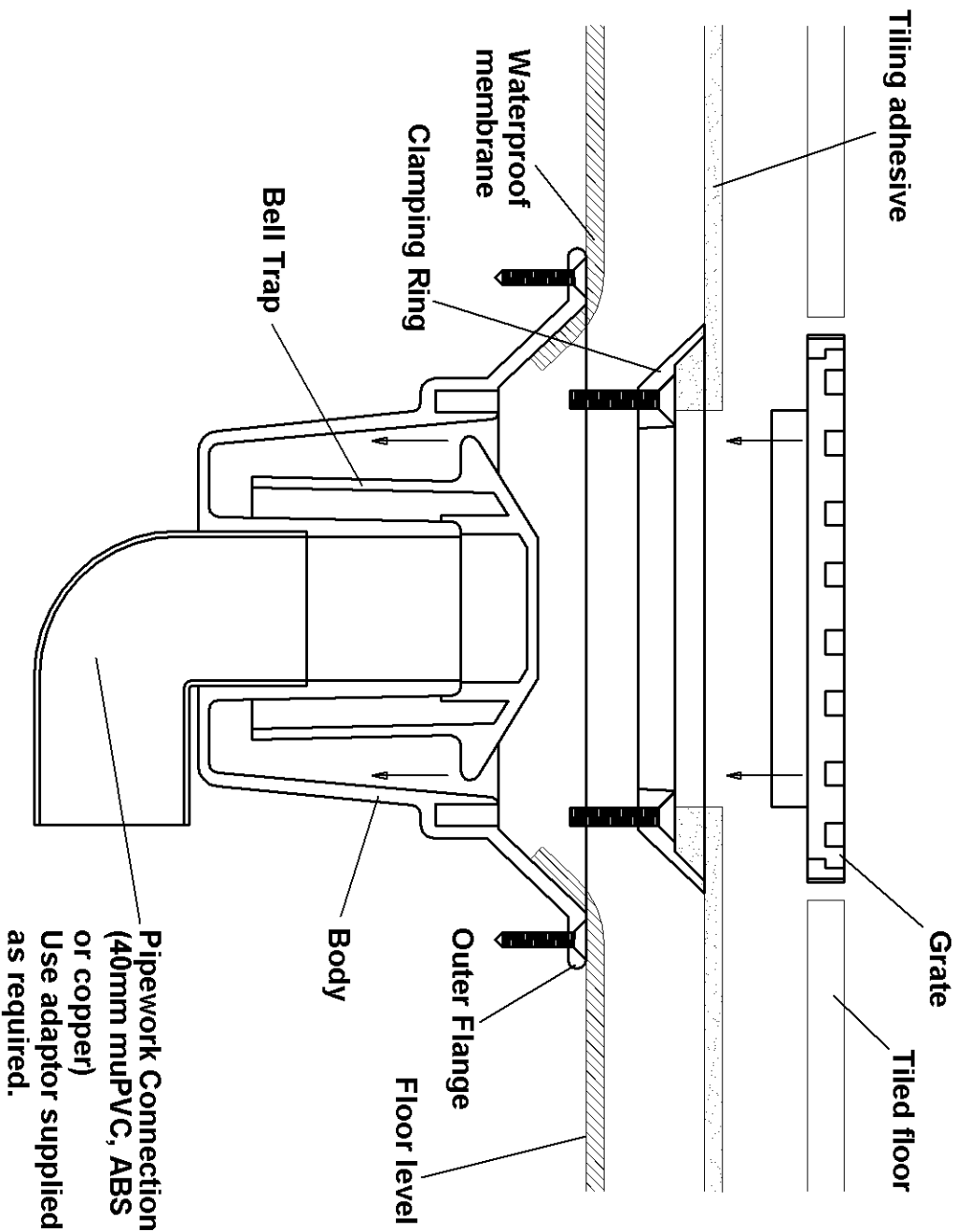


# INSTALLATION INSTRUCTIONS



1. Recess the body "outer flange" into floor surface so the top is level with the structural floor.

2. Connect waste pipe to outlet using adaptor supplied as required.

3. Screw "outer flange" to the structural floor with countersunk screw via 4 holes provided.

4. Dress the waterproofing membrane into the dish of the outlet body. For sheet membranes use a silicone sealant to form a watertight seal between the outlet body and sheet material.

5. Secure the "clamping ring" over the waterproofing membrane with screws provided, ensuring the membrane is fully clamped into position.

6. Place "bell trap" over central outlet opening.

7. Apply tile adhesive around the circular outlet opening and set the square "tile grate" over the outlet body, inline with the required tile grid.

Part code: **DF235**  
**DF237**

**ALUTEC**  
ALUMINIUM RAINWATER SYSTEMS

**MARLEY ALUTEC LTD**

Unit 1 (G-H) Viking Industrial Park,  
Hudson Road, Elms Farm Industrial Estate,  
Bedford MK41 0LZ  
Tel: 01234 359438 Fax: 01234 357199