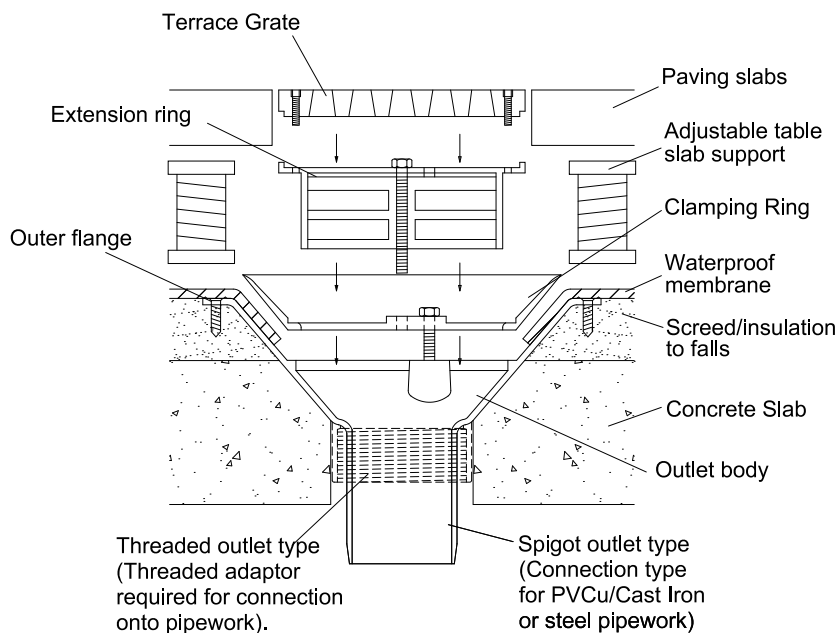


# TYPICAL TERRACE GRATE INSTALLATION INSTRUCTIONS

## Paved Application



1. Recess the body "outer flange" into the roof structure ensuring the top is flush.

2. Connect pipework to outlet.

3. Screw "outer flange" to the roof surface with a countersunk screw via 4 holes provided.

4. Dress the waterproofing membrane into the dish of the outlet body. For sheet membranes use a silicone sealant to form a watertight seal between the outlet body and sheet material.

5. secure "clamping ring" over the waterproofing membrane using the bolts provided, ensuring the membrane is fully clamped into position.

6. Cut "extension ring" to required height then secure to "clamping ring" using the threaded rod and nuts provided.

7. Secure "terrace grate" to "extension ring" using screws provided and rotate to required paving slab grid.



**MARLEY ALUTEC LTD**  
 Unit 1 (G-H) Viking industrial Park,  
 Hudson Road, Elms Farm Industrial Estate,  
 Bedford MK41 0LZ  
 Tel: 01234 359438 Fax: 01234 357199

Threaded outlet type  
(Threaded adaptor  
required for connection  
onto pipework).