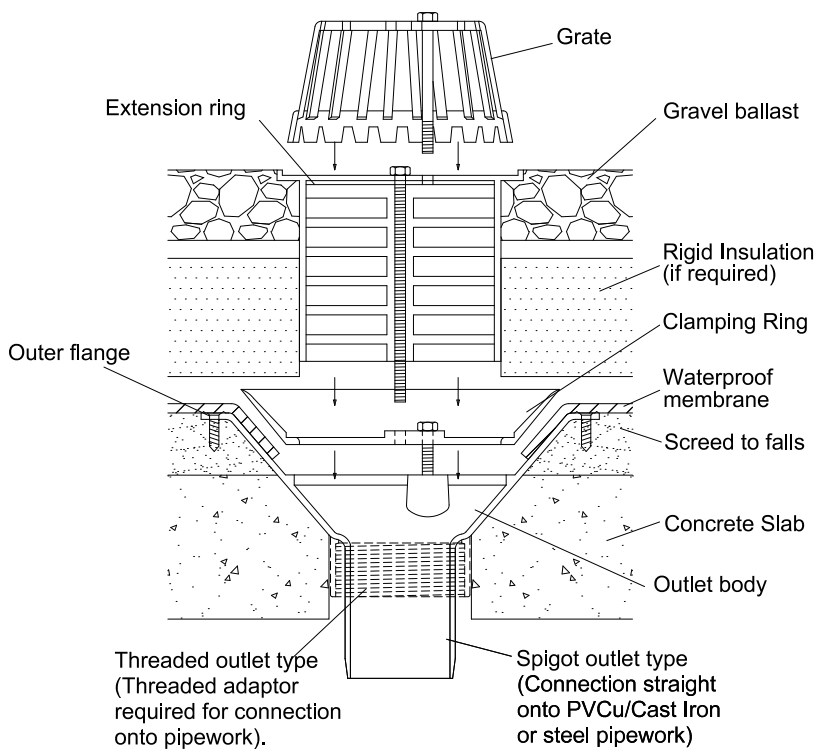


TYPICAL EXTENSION RING INSTALLATION INSTRUCTIONS

Inverted Roof Application



1. Recess the body "outer flange" into the roof surface ensuring the top is flush.

2. Connect pipework to outlet.

3. Screw "outer flange" to the roof surface with a countersunk screw via 4 holes provided.

4. Dress the waterproofing membrane into the dish of the outlet body. For sheet membranes use a silicone sealant to form a watertight seal between the outlet body and sheet material.

5. secure "clamping ring" over the waterproofing membrane using the screws provided, ensuring the membrane is fully clamped into position.

6. Cut "extension ring" to required height then secure to "clamping ring" using the threaded rod and nuts.

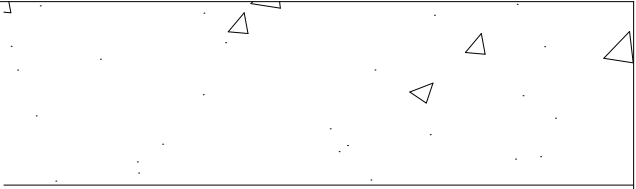
7. Secure "grate" to "extension ring" using bolts provided.



MARLEY ALUTEC LTD

Unit 1 (G-H) Viking industrial Park,
Hudson Road, Elms Farm Industrial Estate,
Bedford MK41 0LZ

Tel: 01234 359438 Fax: 01234 357199



**Threaded outlet type
(Threaded adaptor
required for connection
onto pipework).**