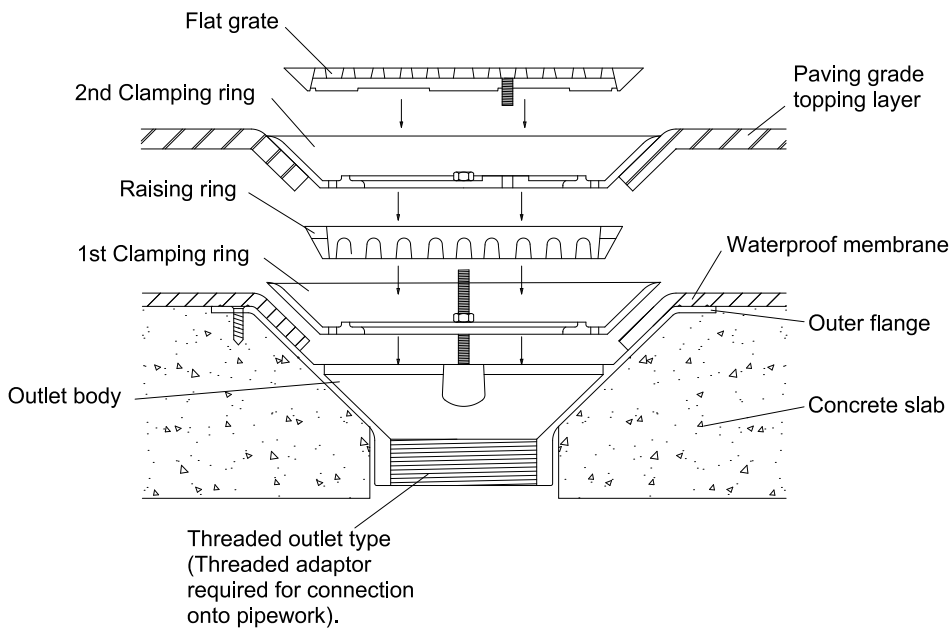


TYPICAL CAR PARK ROOF OUTLET INSTALLATION INSTRUCTIONS



1. Recess the body "outer flange" into the floor surface ensuring the top is flush.

2. Connect pipework to outlet.

3. Screw "outer flange" to the structural surface with a countersunk screw via 4 holes provided.

4. Dress the waterproofing membrane into the dish of the outlet body. For sheet membranes use a silicone sealant to form a watertight seal between the outlet body and sheet material.

5. secure "1st clamping ring" over the waterproofing membrane with bolts provided, ensuring the membrane is fully clamped into position.

6. Place "raising ring" into position on top of "1st clamping ring" then dress paving grade topping layer upto the "raising ring".

7. secure "2nd clamping ring" over the paving grade topping layer with bolts provided, ensuring the clamping ring is level with the finished floor.

8. Secure "flat grate" to "2nd clamping ring" using bolts provided.



MARLEY ALUTEC LTD

Unit 1 (G-H) Viking industrial Park,
Hudson Road, Elms Farm Industrial Estate,
Bedford MK41 0LZ

Tel: 01234 359438 Fax: 01234 357199

Threaded outlet type
(Threaded adaptor
required for connection
onto pipework).